



IDEAL NETWORKS



Sapphire

CARE PLAN



Complete protection
for your **LanTEK® II/III**
cable certifier

Proof of Performance



Sapphire

CARE PLAN

The new **Sapphire Care Plan** for LanTEK® II/III cable certifiers is designed to help minimise down time, reduce the cost of ownership and protect against unforeseen repair bills.



Free Annual Calibration

Maintain Accuracy

Cable certifiers require calibration every 12 months to ensure measurements are accurate and they comply with the international technical standards, ISO IEC 61935-1 and TIA 1152.

We will calibrate the certifier at no extra cost and perform any software and firmware updates that are required.

Free Repairs

Protect Against Unforeseen Bills

The certifier and all accessories are covered for standard repairs during the term of the Sapphire Care Plan.

Free Loan Unit During Repairs and Calibration ***No Downtime***

In the event your LanTEK II/III may need repair, a loan tester will be dispatched within one working day of a fault being reported.

For calibrations a loan unit is supplied to minimise downtime and keep you up and running. The loan unit is delivered prior to your LanTEK II/III being collected.

Free Shipping ***Reduce Costs***

When your LanTEK II/III requires repair or calibration we will arrange for onsite collection and return delivery, free of charge.

Free Replaceable Wear Parts

Reduce Cost of Ownership

Every year choose from one of the following options, free of charge.


- 4 x Permanent Link Adapter Tips (Pair)
- 4 x CAT6A Reference Patch Cord (Single)
- 2 x CAT6A Channel Adapter (Single)
- 2 x CAT6/5e Channel Adapter (Single)
- 2 x LanTEK II/III Battery (Single)

Free Training and Technical Support

Our expert technicians will provide online training and technical support, free of charge. Please contact us on **+ 44 (0)1925 444446** and provide your **Sapphire Care Plan** certificate number.

Pricing

Receive 10% discount on your **Sapphire Care Plan** if purchased within 60 days of your LanTEK II/III purchase.

	Sapphire Care Plan purchased within 60 days	Sapphire Care Plan purchased after 60 days
1 Year	£ 716	£ 795
2 Years	£ 1,332	£ 1,480
3 Years	£ 1,935	£ 2,150

All information and prices stated in this brochure are correct at time of printing and subject to change without notice. Prices exclude VAT.

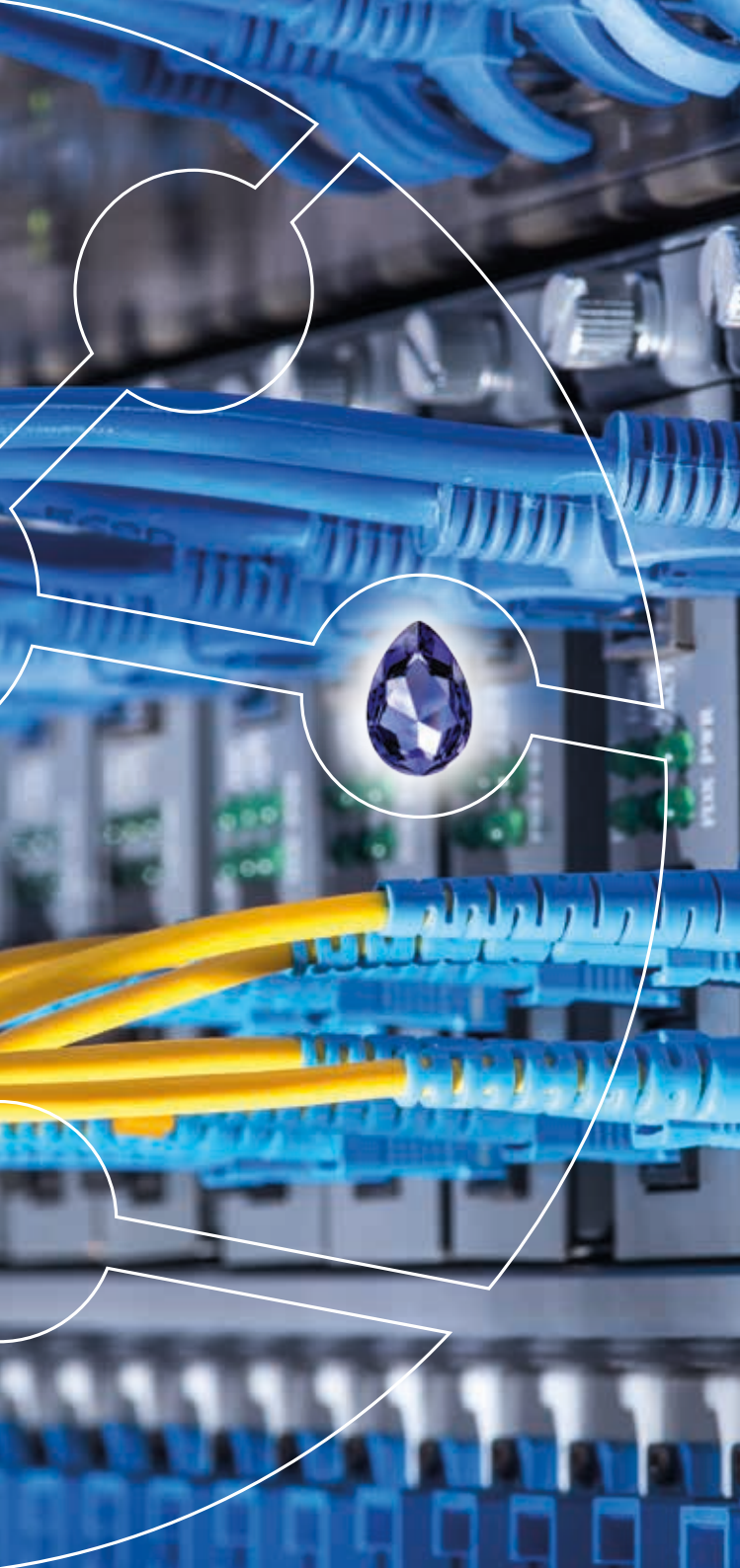
Cost Comparison

Item	Without Sapphire Care Plan	Sapphire Care Plan
Annual Calibration	£ 267	Included
Wear parts per annum	£ 246	Included
Shipping costs	£ 50 or more	Included
Repair costs	£ 555 per repair	Included
Certifier hire	£ 450 per week	Included
Total	£ 1,568	£ 716
Save £ 852*		

* Saving is based on purchasing a one year Sapphire Care Plan with a new LanTEK III. Prices exclude VAT.

Exclusions

- LanTEK II/III certifiers older than 5 years
- Defects arising from fair wear and tear, wilful damage or negligence





Sapphire CARE PLAN

Terms and Conditions

- The first free accessories can be claimed anytime within the first twelve months of the Sapphire Care Plan commencing. Accessories cannot be carried over to the following twelve month period and it is the customer's responsibility to claim the free accessories.
- Customer must return the certifier(s) on loan within one week of receiving their certifier(s). Please contact customer services to arrange collection of the loan unit(s). If not, the customer will be billed for the full replacement cost of the loaned unit(s).
- Customer must include all permanent link and channel adapters when sending a certifier for calibration.
- Calibration loan units – To ensure a loan unit is available, the calibration must be scheduled 6 weeks in advance of the requested calibration date. The calibration must also occur within 4 weeks of the calibration due date. If the calibration is scheduled outside of this time period, there is no guarantee that a loan unit will be available.
- The Sapphire Care Plan cannot be purchased for LanTEK II certifiers older than 5 years.
- Free repairs are not included for defects arising from fair wear and tear, wilful damage or negligence.
- If a Sapphire Care Plan is purchased for a LanTEK II/III certifier unit that is older than 60 days, prior to coverage taking effect, a prior inspection of the unit will be required to ascertain that it is in good working order. If faults are found or calibration is required, an estimate for the repair or calibration cost will be provided to you for approval. Once authorisation and payment have been received, the LanTEK II/III will receive priority service and the Sapphire Care Plan will commence upon shipment to you. If the LanTEK II/III certifier unit is in working order, no charge will be incurred for the cost of inspection and the LanTEK II/III certifier unit will be returned and the Sapphire Care Plan will commence on the date the certifier is returned.



IDEAL NETWORKS

All Rights Reserved. IDEAL, IDEAL NETWORKS, LanTEK, FiberTEK and the IDEAL AnyWARE logos are trademarks or registered trademarks of IDEAL INDUSTRIES LIMITED or IDEAL INDUSTRIES, INC.

A subsidiary of
IDEAL INDUSTRIES INC.



IDEAL INDUSTRIES, INC.

IDEAL INDUSTRIES NETWORKS DIVISION
Unit 3, Europa Court, Europa Boulevard,
Warrington, Cheshire, WA5 7TN, UK.

Tel. +44 (0)1925 444 446

Fax. +44 (0)1925 445501

uksales@idealnwd.com

www.idealnetworks.net

Specification subject to change without notice. E&OE
© IDEAL Networks 2017 Publication no.: 161839, Rev 1