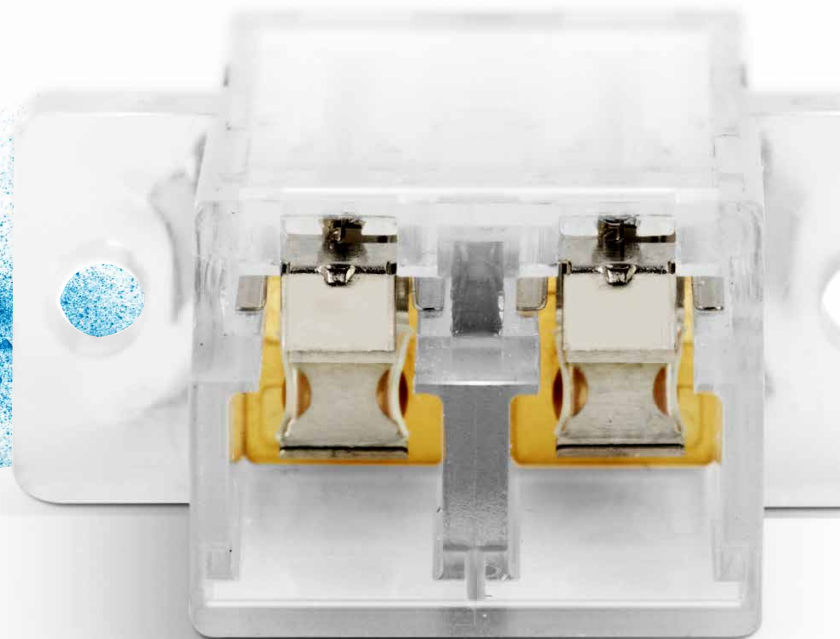
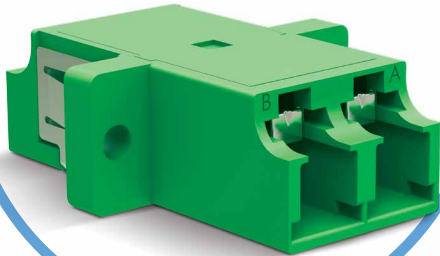


LC Adapter with *INNER SHUTTER*

DUSTPROOF

Dust and Laser Protection



With increasingly high-powered active devices being used in today's networking and telecommunication platforms, eye safety and connector cleanliness are an absolute necessity. Senko's dustproof LC adapter with Internal shutter has been designed to meet this growing need.

You can actuate this integrated, retractable shutter inside the adapter body by inserting the LC connector into the adapter. The shutter automatically opens as you insert the LC connector, and closes as you extract it. Due to the special design of the shutter, it will not touch the ferrule end face when you insert a connector, thus preventing end-face damage. The internal shutter prevents eye exposure to lasers and provides protection from dust and other contaminants.

It keeps adapter's interior clean from dust

FEATURES

- Provides eye safety by attenuating laser light when the mated connector is removed
- 100% automatic shutter mechanism requiring no operator handling of the shutter door
- Compatible with standard LC connectors
- It keeps adapter's interior clean from dust
- Complete SC footprint
- You can see the visible light through the adapter,



Dust Protection

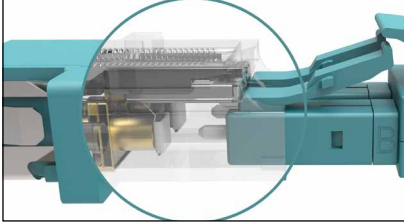


Eye safety shutter



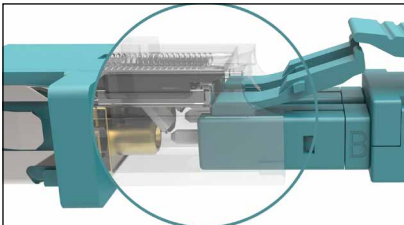
Visible light for easy identification

LC Adapter with Inner Shutter Step by Step



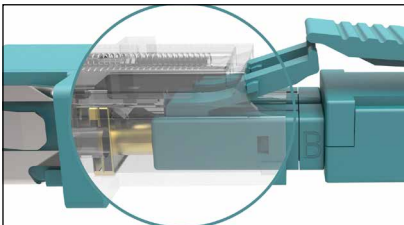
▶ 1 - Connector insertion

When the connector is inserted into the adapter it compresses the springs, opening the internal shutter.



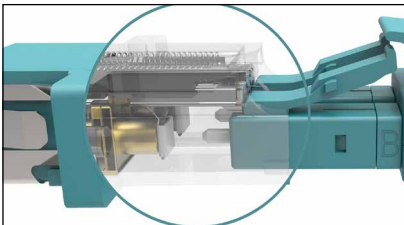
▶ 2 - Shutter opening

The internal shutter opens, and due to the special design of the shutter, it will not touch the ferrule end face.



▶ 3 - Connector mated with adapter

The opening of the shutter allows for the ferrule to be inserted inside the adapter sleeve.

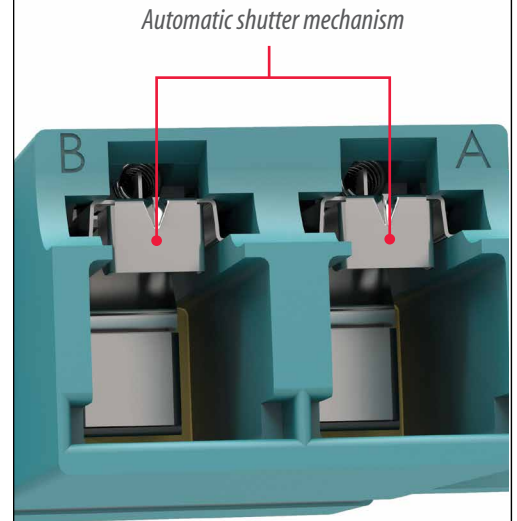


▶ 4 - Connector removal

As the connector is removed from the adapter, the shutter spring automatically returns the internal shutter to the closed position.

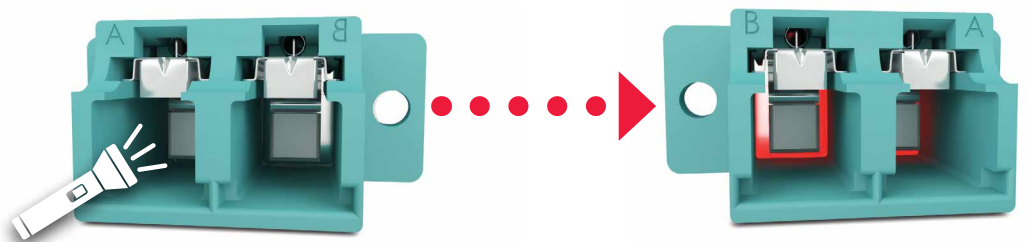
FEATURES

- Provides eye safety by attenuating laser light when the mated connector is removed
- 100% automatic shutter mechanism requiring no operator handling of the shutter door
- Compatible with standard LC connectors
- It keeps adapter's interior clean from dust
- Complete SC footprint
- You can see the visible light through the adapter




LC Adapter Traceability

When trying to trace the adapter using a visible light source you can see the red light glowing through the adapter sleeve.



SENKO ADVANCED COMPONENTS, INC.

America
USA EAST 1-888-32-SENKO
USA WEST 1-858-623-3300
TEXAS 1-972-661-9080
Sales-Americas@senko.com

South America
BRAZIL +55-21-3736-7065
Sales-Brazil@senko.com

Asia
HONG KONG +852-2121-0516
SHANGHAI +86-21-5830-4513
SHENZHEN +86-755-2533-4893
Sales-Asia@senko.com

Europe
UK +44 (0)1256 700880
ITALY +39 011 839 98 28
POLAND + 48 71 396 36 59
Sales-Europe@senko.com

Asia Pacific
AUSTRALIA +61 (0) 3 9755-7922
Sales-Asia-Pacific@senko.com
Middle East North Africa
DUBAI +971 4 8865160
Sales-MENA@senko.com

Japan
TOKYO +81 (0) 3 5825-0911
Sales-Japan@senko.com

CALL 1-888-32-SENKO